



DESCRIPTION

A HOME LIKE THIS IS PERFECT FOR THOSE LAKE-GOERS AND ART LOVERS, THOUGH THIS LAYOUT FEATURES MANY WINDOWS FOR EXTERIOR VIEWS, IT ALSO HAS SEVERAL SPACES FOR INTERIOR ART HANGING, ACCOMPANIED BY A GALLERY SPACE! ITS OPPORTUNITY FOR FUTURE EXPANSION IS HIGHER THAN MOST AS IT HAS AN AREA SET ASIDE TO BECOME A FUTURE BOATSLIP. BUT IF ONE BOAT IS ENOUGH, THEN DECK SPACE NEVER HURT ANYBODY EITHER!

AREA CALCULATIONS

FIRST FLOOR CONDITIONED

503 SQ FT

SECOND FLOOR CONDITIONED

1492 SQ FT

TOTAL CONDITIONED

1995 SQ FT

FIRST FLOOR UNDER ROOF

1843. SQ FT

SECOND FLOOR UNDER ROOF

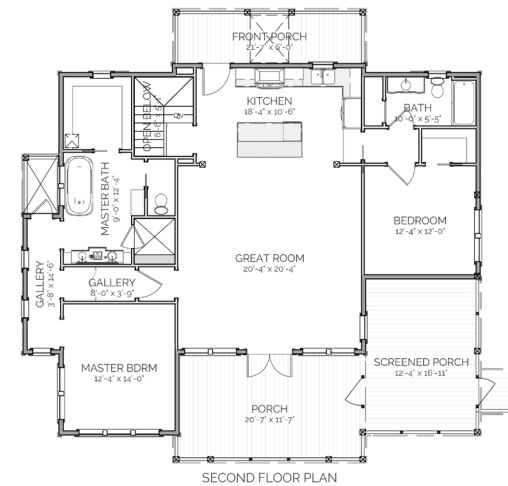
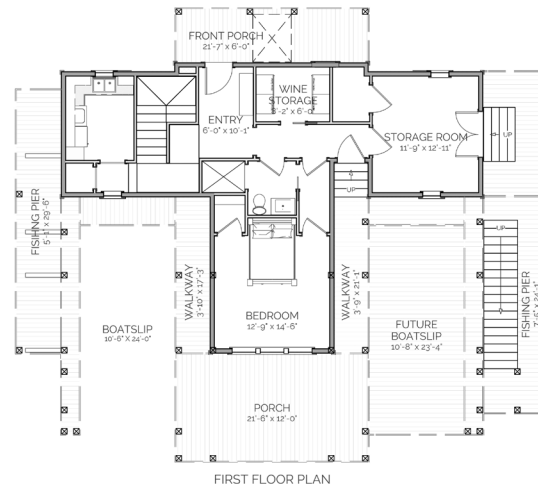
2125 SQ FT

TOTAL UNDER ROOF

3968 SQ FT

HIGHLIGHTS

- WINE STORAGE ▪ SINGLE-FAMILY
- FUTURE TWO BOAT SLIP ▪ PORCH
- EFFICIENT ▪ DECK ▪ 3 BATHROOM
- ONE BOAT SLIP ▪ 3 BEDROOM



TUPELO BOATHOUSE

OVERALL DIMENSIONS:
50' 9" WIDE X 50' 3" DEEP

THIS IS PROPERTY OF LAKE + LAND STUDIO, LLC. THIS IS NOT A CONSTRUCTION DOCUMENT AND MAY NOT BE USED OR REPRODUCED WITHOUT THE PERMISSION OF LAKE + LAND STUDIO, LLC.

LAKE + LAND STUDIO, LLC

15 KEYSTONE DRIVE, SUITE A
HATTIESBURG, MS 39402
601.336.8114

WWW.LAKEANDLANDSTUDIO.COM