



## DESCRIPTION

THIS APARTMENT/BOATHOUSE COMBINATION IS PERFECT FOR AN ANGLER LOW ON TIME. WITH ITS MINIMAL WRAP AROUND DECK ON THE WATER AND LOFT ABOVE, IT HAS ALL A BUSY ANGLER COULD DESIRE! AND AFTER A LONG DAY OF FISHING, A VISIT TO THE SCREENED PORCH IS PERFECT FOR UNWINDING.

## AREA CALCULATIONS

FIRST FLOOR CONDITIONED  
58 SQ FT  
SECOND FLOOR CONDITIONED  
645 SQ FT  
THIRD FLOOR CONDITIONED  
134 SQ FT  
TOTAL CONDITIONED  
823 SQ FT  
FIRST FLOOR UNDER ROOF  
700 SQ FT  
SECOND FLOOR UNDER ROOF  
914 SQ FT  
THIRD FLOOR UNDER ROOF  
171 SQ FT  
TOTAL UNDER ROOF  
1774 SQ FT

## HIGHLIGHTS

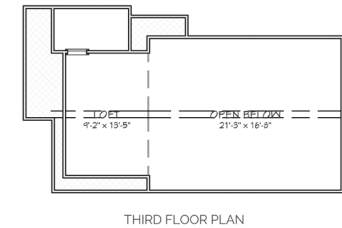
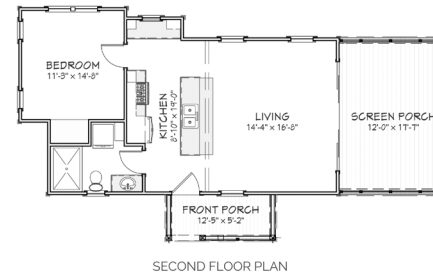
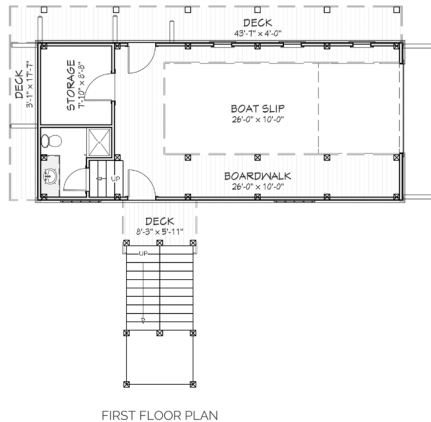
- LOFT ▪ APARTMENT ▪ ONE-SLIP
- COMPACT ▪ SCREENED PORCH
- DECK ▪ 1 BEDROOM ▪ 2 BATHROOM
- BOATHOUSE ▪ TWO-STORY



SIDE ELEVATION



LAKE ELEVATION



# TREMONT BOATHOUSE

**OVERALL DIMENSIONS:**  
25' 10" WIDE X 47' 6" DEEP

THIS IS PROPERTY OF LAKE + LAND STUDIO, LLC. THIS IS NOT A CONSTRUCTION DOCUMENT AND MAY NOT BE USED OR REPRODUCED WITHOUT THE PERMISSION OF LAKE + LAND STUDIO, LLC.

## LAKE + LAND STUDIO, LLC

15 KEYSTONE DRIVE, SUITE A  
HATTISBURG, MS 39402  
601.336.8114  
WWW.LAKEANDLANDSTUDIO.COM