



**D E S C R I P T I O N**

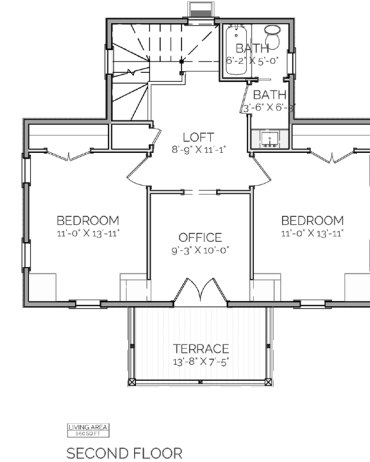
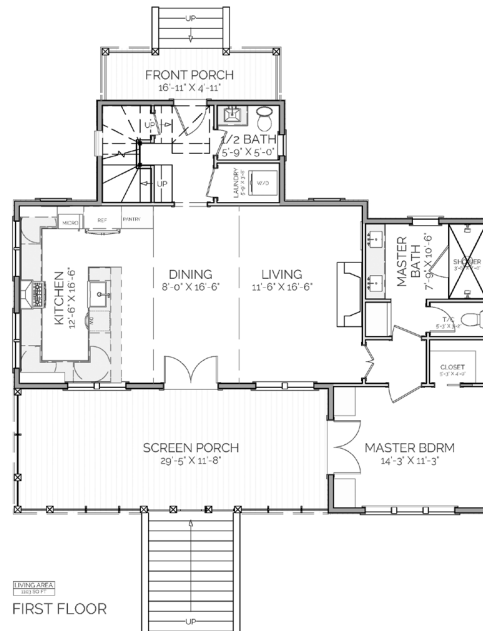
THE MERIGOLD RETREAT IS LOVELY, EFFICIENT HOME. THE OPEN CONCEPT KITCHEN/ DINING/ LIVING ROOM OPENS TO A LARGE SCREENED PORCH. THE MASTER SUITE HAS ITS OWN PRIVATE WING DOWNSTAIRS WITH LARGE CUSTOM SHOWER AND DOUBLE VANITY. UPSTAIRS OFFERS A QUINT LOFT SPACE, ADDITIONAL FULL BATHROOM, 2 BEDROOMS, AND AN OFFICE WITH TERRACE ACCESS.

**A R E A C A L C U L A T I O N S**

FIRST FLOOR CONDITIONED  
1,103 SQ FT  
SECOND FLOOR CONDITIONED  
660 SQ FT  
TOTAL CONDITIONED  
1,763 SQ FT  
FIRST FLOOR UNDER ROOF  
1,527 SQ FT  
SECOND FLOOR UNDER ROOF  
839 SQ FT  
TOTAL UNDER ROOF  
2,366 SQ FT

**H I G H L I G H T S**

- LARGE SCREEN PORCH
- EFFICIENT    ▪ FIREPLACE
- OPEN CONCEPT    ▪ OFFICE
- 3 BEDROOMS    ▪ 2 1/2 BATH



# MERIGOLD RETREAT

THIS IS PROPERTY OF LAKE + LAND STUDIO, LLC. THIS IS NOT A CONSTRUCTION DOCUMENT AND MAY NOT BE USED OR REPRODUCED WITHOUT THE PERMISSION OF LAKE + LAND STUDIO, LLC.

**LAKE + LAND STUDIO, LLC**  
HATTIESBURG, MS 39402  
601.336.8114  
WWW.LAKEANDLANDSTUDIO.COM