



D E S C R I P T I O N

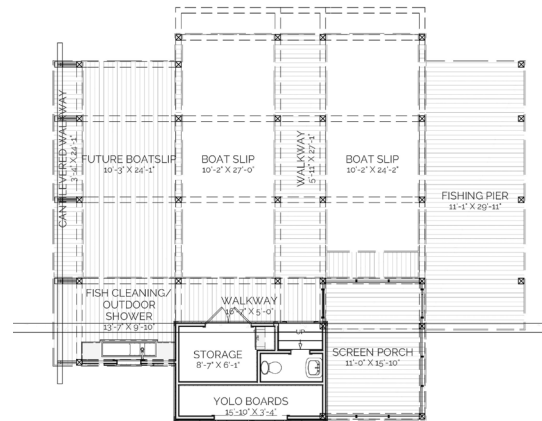
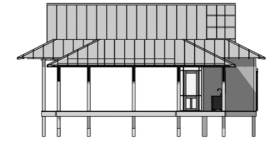
THE KOSCIUSKO BOATHOUSE IS ALL ABOUT THE FUTURE. WITH TWO BOAT SLIPS ALREADY IN PLACE, IT HAS AN ADDITIONAL FUTURE BOAT SLIP AREA AVAILABLE FOR USE AS A DECK UNTIL YOU MUSTER UP THE STRENGTH TO GET THAT FANCY NEW PONTOON BOAT YOU PASS GOING TO WORK EVERY DAY. THOUGH ITS FISHING PIER IS QUITE EXPANSIVE, IT COULD WORK AS A NICE SUN DECK SO LONG AS IT ISN'T FACING NORTH. WITH A HALF BATH RIGHT NEXT TO THE SCREEN PORCH, THIS PLACE HAS JUST ENOUGH TO KEEP YOU FROM GOING HOME DURING THE DAY, OR AT LEAST UNTIL THE SUN GOES DOWN.

A R E A C A L C U L A T I O N S

FIRST FLOOR CONDITIONED
0 SQ FT
TOTAL CONDITIONED
0 SQ FT
FIRST FLOOR UNDER ROOF
1632 SQ FT
TOTAL UNDER ROOF
1632 SQ FT

H I G H L I G H T S

- FISHING PIER ▪ STORAGE
- SPACIOUS ▪ YOLO BOARD STORAGE
- POTENTIAL SLIP ▪ 1/2 BATHROOM
- 2 BOAT SLIP ▪ SCREEN PORCH



KOSCIUSKO

BOATHOUSE

THIS IS PROPERTY OF LAKE + LAND STUDIO, LLC. THIS IS NOT A CONSTRUCTION DOCUMENT AND MAY NOT BE USED OR REPRODUCED WITHOUT THE PERMISSION OF LAKE + LAND STUDIO, LLC.

LAKE + LAND STUDIO, LLC
HATTIESBURG, MS 39402
601.336.8114
WWW.LAKEANDLANDSTUDIO.COM