



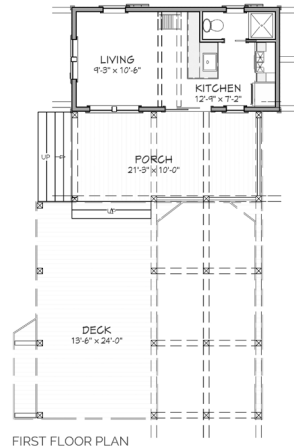
D E S C R I P T I O N

THIS BOATHOUSE WAS DESIGNED FOR THOSE WHO DESIRE A COMPACT LIVING SPACE. THOUGH COMPACT, THIS EFFICIENT LAYOUT HAS PLENTY OF ADJACENT COVERED OUTDOOR SPACE-NOT TO MENTION THE COVERED STORAGE SPACE FOR A BOAT. ALLOWING FOR TRAVEL ON WATER AND SAFELY STORING AFTER, THIS BOATHOUSE HAS IT ALL!

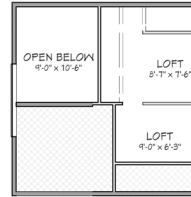


A R E A C A L C U L A T I O N S

FIRST FLOOR CONDITIONED
265 SQ FT
SECOND FLOOR CONDITIONED
168 SQ FT
TOTAL CONDITIONED
433 SQ FT
FIRST FLOOR UNDER ROOF
765 SQ FT
SECOND FLOOR UNDER ROOF
168 SQ FT
TOTAL UNDER ROOF
933 SQ FT



FIRST FLOOR PLAN



SECOND FLOOR PLAN



H I G H L I G H T S

- BOATHOUSE ▪ STUDIO
- EFFICIENT ▪ DECK ▪ 2 LOFT
- COVERED PORCH ▪ 0.5 BATHROOM
- ONE-SLIP ▪ COMPACT

JONESTOWN

BOATHOUSE

THIS IS PROPERTY OF LAKE + LAND STUDIO, LLC. THIS IS NOT A CONSTRUCTION DOCUMENT AND MAY NOT BE USED OR REPRODUCED WITHOUT THE PERMISSION OF LAKE + LAND STUDIO, LLC.

LAKE + LAND STUDIO, LLC

HATTIESBURG, MS 39402
601.336.8114
WWW.LAKEANDLANDSTUDIO.COM



D E S C R I P T I O N

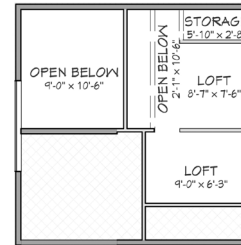
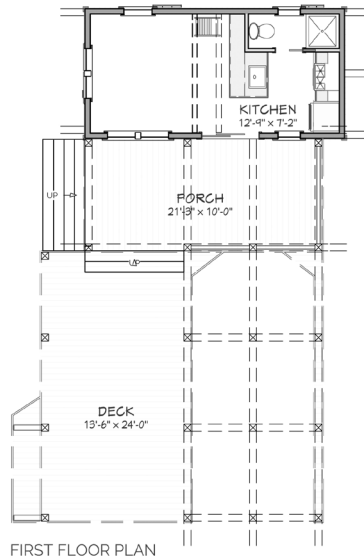
THIS SPACIOUS HOME WAS CREATED JUST FOR THE FAMILY-ORIENTED; WITH ITS LARGE LIVING SPACES AND NUMEROUS AMENITIES, IT IS PERFECT FOR ANY "HOMEY" FAMILY. THOUGH THIS HOME DESIGN HAS COPIOUS AMOUNTS OF SPACE, IT IS ALSO ACCOMPANIED BY A VIEWING TOWER, WHICH ADDS TO AN IMPRESSIVE ENTRY WAY ON THE GROUND FLOOR. MORE OF AN OUTDOORSMAN? GO OUT ON THE COVERED DECKS AND SCREENED IN PORCH.

A R E A C A L C U L A T I O N S

- FIRST FLOOR CONDITIONED
265 SQ FT
- SECOND FLOOR CONDITIONED
168 SQ FT
- TOTAL CONDITIONED
433 SQ FT
- FIRST FLOOR UNDER ROOF
765 SQ FT
- SECOND FLOOR UNDER ROOF
168 SQ FT
- TOTAL UNDER ROOF
933 SQ FT

H I G H L I G H T S

- VIEWING TOWER
- SINGLE-FAMILY
- ENTERTAINMENT ROOM
- SPACIOUS
- SCREENED PORCH
- 3.5 BATHROOM
- CRAFT ROOM
- DECK
- 3 BEDROOM



SECOND FLOOR PLAN



J O N E S T O W N

BOATHOUSE

THIS IS PROPERTY OF LAKE + LAND STUDIO, LLC. THIS IS NOT A CONSTRUCTION DOCUMENT AND MAY NOT BE USED OR REPRODUCED WITHOUT THE PERMISSION OF LAKE + LAND STUDIO, LLC.

LAKE + LAND STUDIO, LLC

HATTIESBURG, MS 39402

601.336.8114

WWW.LAKEANDLANDSTUDIO.COM



D E S C R I P T I O N

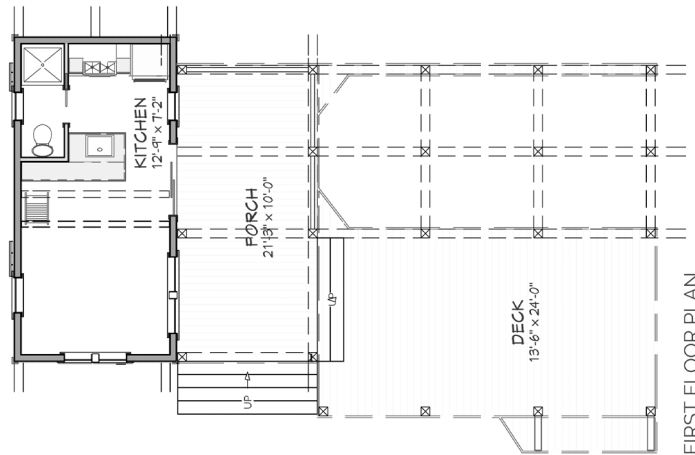
THIS SPACIOUS HOME WAS CREATED JUST FOR THE FAMILY-ORIENTED; WITH ITS LARGE LIVING SPACES AND NUMEROUS AMENITIES, IT IS PERFECT FOR ANY "HOMEY" FAMILY. THOUGH THIS HOME DESIGN HAS COPIOUS AMOUNTS OF SPACE, IT IS ALSO ACCOMPANIED BY A VIEWING TOWER, WHICH ADDS TO AN IMPRESSIVE ENTRY WAY ON THE GROUND FLOOR. MORE OF AN OUTDOORSMAN? GO OUT ON THE COVERED DECKS AND SCREENED IN PORCH.

A R E A C A L C U L A T I O N S

- FIRST FLOOR CONDITIONED
265 SQ FT
- SECOND FLOOR CONDITIONED
168 SQ FT
- TOTAL CONDITIONED
433 SQ FT
- FIRST FLOOR UNDER ROOF
765 SQ FT
- SECOND FLOOR UNDER ROOF
168 SQ FT
- TOTAL UNDER ROOF
933 SQ FT

H I G H L I G H T S

- VIEWING TOWER
- SINGLE-FAMILY
- ENTERTAINMENT ROOM
- SPACIOUS
- SCREENED PORCH
- 3.5 BATHROOM
- CRAFT ROOM
- DECK
- 3 BEDROOM



FIRST FLOOR PLAN



SECOND FLOOR PLAN

J O N E S T O W N

BOATHOUSE

THIS IS PROPERTY OF LAKE + LAND STUDIO, LLC. THIS IS NOT A CONSTRUCTION DOCUMENT AND MAY NOT BE USED OR REPRODUCED WITHOUT THE PERMISSION OF LAKE + LAND STUDIO, LLC.

LAKE + LAND STUDIO, LLC

HATTIESBURG, MS 39402

601.336.8114

WWW.LAKEANDLANDSTUDIO.COM