



## DESCRIPTION

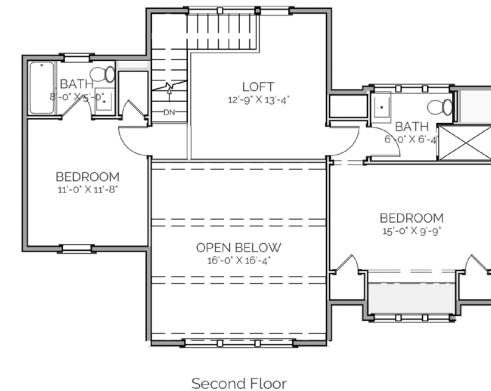
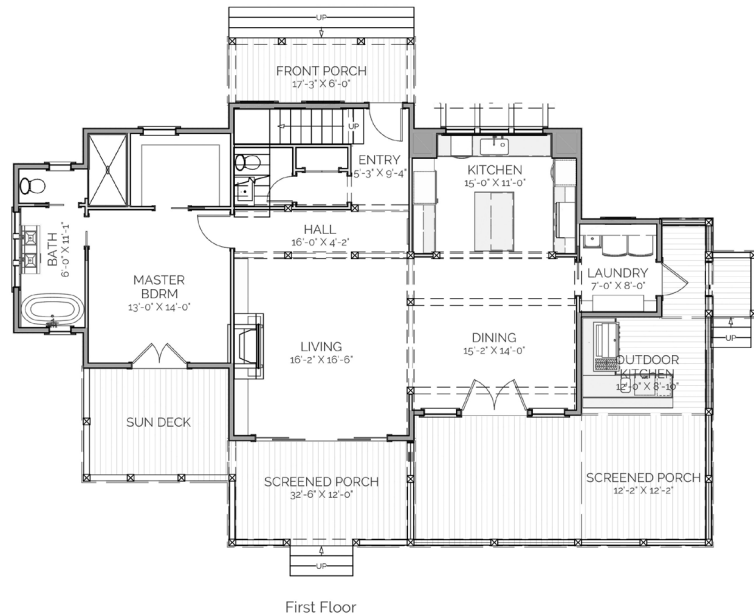
THE CRAWFORD RETREAT CONTAINS THOUGHTFUL INTERIOR SPACES AND WELCOMING PORCHES IDEAL FOR ENJOYING GUESTS AND THE GREAT OUTDOORS. THIS RETREAT HOSTS A VAULTED CEILING THROUGH TO THE SECOND FLOOR. THE FIRST FLOOR HOUSES A MASTER SUITE WITH LARGE A WALK-IN CLOSET AND SEPERATE TUB AND SHOWER. THE SECOND FLOOR HOLDS TWO ADDITIONAL BEDROOMS WITH A LOFT OVER LOOKING THE LIVING ROOM. TAKE ADVANTAGE OF THE AMPLE PORCH SPACES WITH AN OUTDOOR KITCHEN. THIS RETREAT IS PERFECT FOR A LAKE SIDE OR SUBURBAN AREA.

## AREA CALCULATIONS

FIRST FLOOR CONDITIONED  
1,372 SQ FT  
SECOND FLOOR CONDITIONED  
701 SQ FT  
TOTAL CONDITIONED  
2,073 SQ FT  
FIRST FLOOR UNDER ROOF  
2,300 SQ FT  
SECOND FLOOR UNDER ROOF  
701 SQ FT  
TOTAL UNDER ROOF  
3,001 SQ FT

## HIGHLIGHTS

- SCREEN PORCH ▪ GREAT ROOM
- LOFT ▪ PORCH SPACE
- 3 BEDROOM ▪ OUTDOOR KITCHEN
- 3 1/2 BATHROOM ▪ FIREPLACE



# CRAWFORD RETREAT

**OVERALL DIMENSIONS:**  
68' 3" WIDE X 46' 8" DEEP

THIS IS PROPERTY OF LAKE + LAND STUDIO, LLC. THIS IS NOT A CONSTRUCTION DOCUMENT AND MAY NOT USED OR REPRODUCED WITHOUT THE PERMISSION OF LAKE + LAND STUDIO, LLC.

**LAKE + LAND STUDIO, LLC**

HATTIESBURG, MS 39402

601.336.8114

WWW.LAKEANDLANDSTUDIO.COM