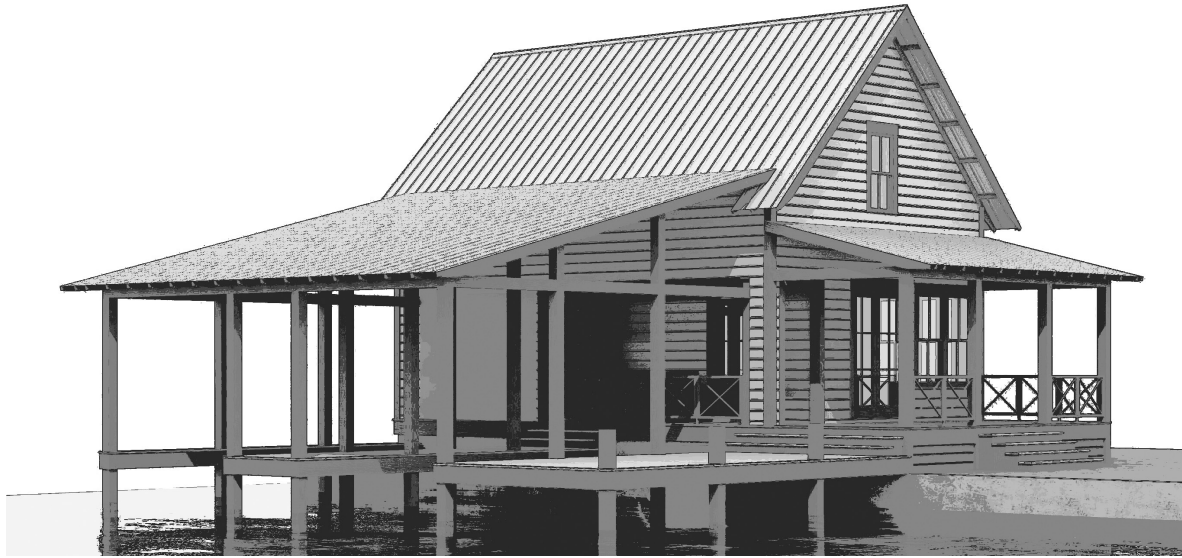




## DESCRIPTION

THIS COMPACT BOATHOUSE IS THE PERFECT GETAWAY! THE LOFT IS A GREAT SPACE WITH THE STEEP ROOF PITCH GIVING THE LOFT THAT EXTRA HEAD HEIGHT. ITS GENEROUS CEILING HEIGHTS IN THE LIVING, KITCHEN AND DINING BRING A LIGHT-HEARTED FEEL TO THE INTERIORS.



## AREA CALCULATIONS

FIRST FLOOR CONDITIONED

575 SQ FT

SECOND FLOOR CONDITIONED

273 SQ FT

TOTAL CONDITIONED

848 SQ FT

FIRST FLOOR UNDER ROOF

1742 SQ FT

SECOND FLOOR UNDER ROOF

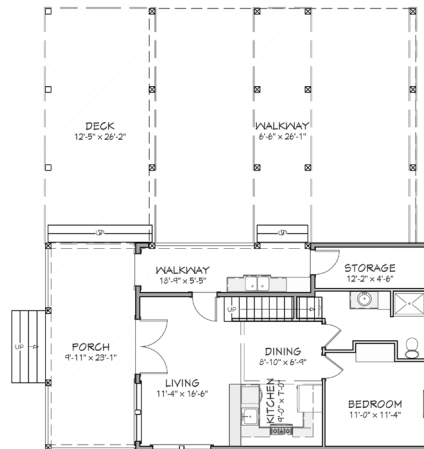
273 SQ FT

TOTAL UNDER ROOF

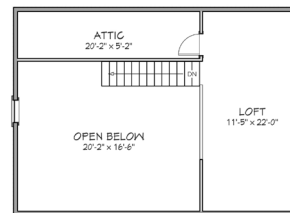
1997 SQ FT

## HIGHLIGHTS

- ATTIC SPACE ▪ BOATHOUSE
- TWO-SLIP ▪ COMPACT
- PORCH ▪ 1.5 STORY ▪ 1 BATHROOM
- LOFT ▪ DECK ▪ 1 BEDROOM



FIRST FLOOR PLAN



SECOND FLOOR PLAN



# COLDWATER

## BOATHOUSE

THIS IS PROPERTY OF LAKE + LAND STUDIO, LLC. THIS IS NOT A CONSTRUCTION DOCUMENT AND MAY NOT BE USED OR REPRODUCED WITHOUT THE PERMISSION OF LAKE + LAND STUDIO, LLC.

**LAKE + LAND STUDIO, LLC**

HATTIESBURG, MS 39402

601.336.8114

WWW.LAKEANDLANDSTUDIO.COM