



DESCRIPTION

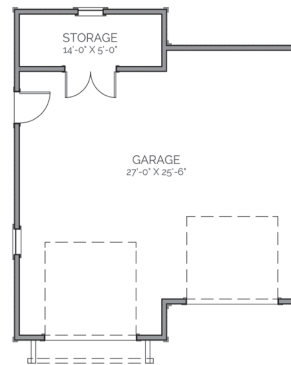
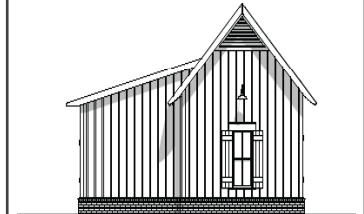
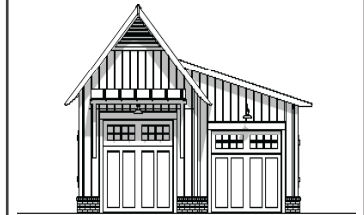
THIS 2 BAY GARAGE HAS AN ARCHITECTURALLY PLEASING DESIGN THAT CAN MAKE A GREAT ADDITION TO A HOME. IT IS COMPLETE WITH STORAGE ROOM AND THE ABILITY TO CONNECT TO THE HOUSE WITH A BREEZEWAY.

AREA CALCULATIONS

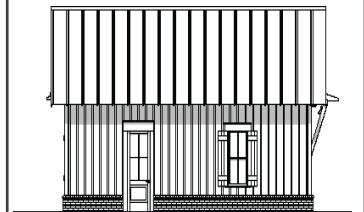
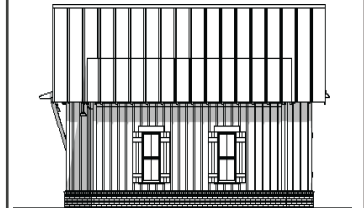
FIRST FLOOR UNDER ROOF
805 SQ FT
TOTAL UNDER ROOF
805 SQ FT

HIGHLIGHTS

- ONE STORY
- STORAGE ROOM
- 2 BAY GARAGE



FLOOR PLAN



BRANDON (FRONT LOADED)

GARAGE

OVERALL DIMENSIONS:
28' WIDE X 32' DEEP

THIS IS PROPERTY OF LAKE + LAND STUDIO, LLC. THIS IS NOT A CONSTRUCTION DOCUMENT AND MAY NOT BE USED OR REPRODUCED WITHOUT THE PERMISSION OF LAKE + LAND STUDIO, LLC.

LAKE + LAND STUDIO, LLC

HATTIESBURG, MS 39402

601.336.8114

WWW.LAKEANDLANDSTUDIO.COM